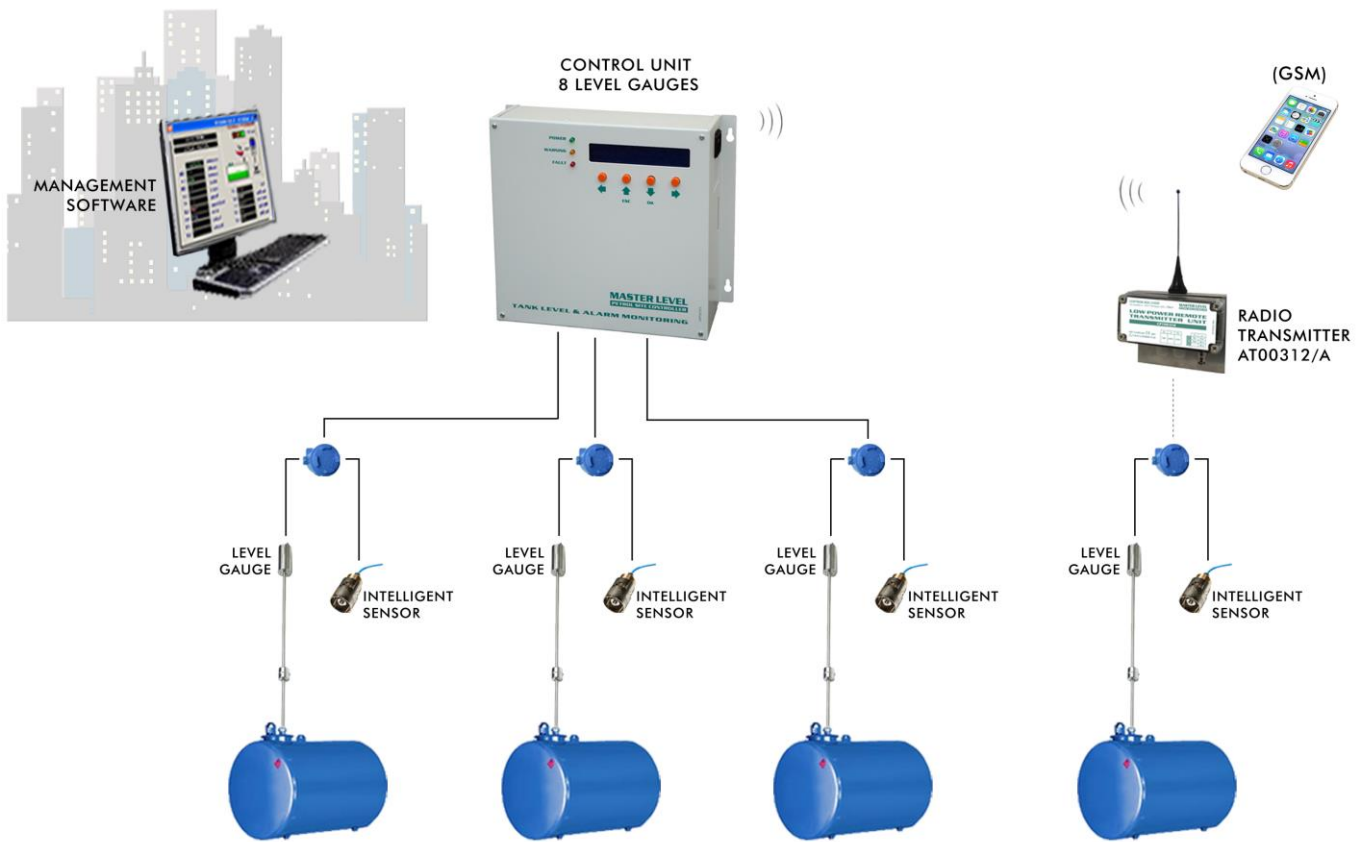


Level measurement and leakage alarm control unit for waterproof level gauges and sensors MASTER LEVEL series AT11710 8 gauges



Level measurement and leakage alarm monitoring control unit for tanks, piping and wells. Management of 8 level gauges and 16 leakage alarm sensors, 4/8 on/off inputs and up to 8 relays with programmable-event outputs. It can be connected to other 4 devices to extend the level, alarm and relay control and to allow interfacing with main control systems installed on refuelling stations.

The GSM/GPRS module, installed on a special slot (host 1), allows receiving alarm message and requiring product stock from one or more service stations or storehouses.

Using the MasterTank Tre software it is possible to centralise the collection of information for products stored in up to 128 remote systems.

Technical data

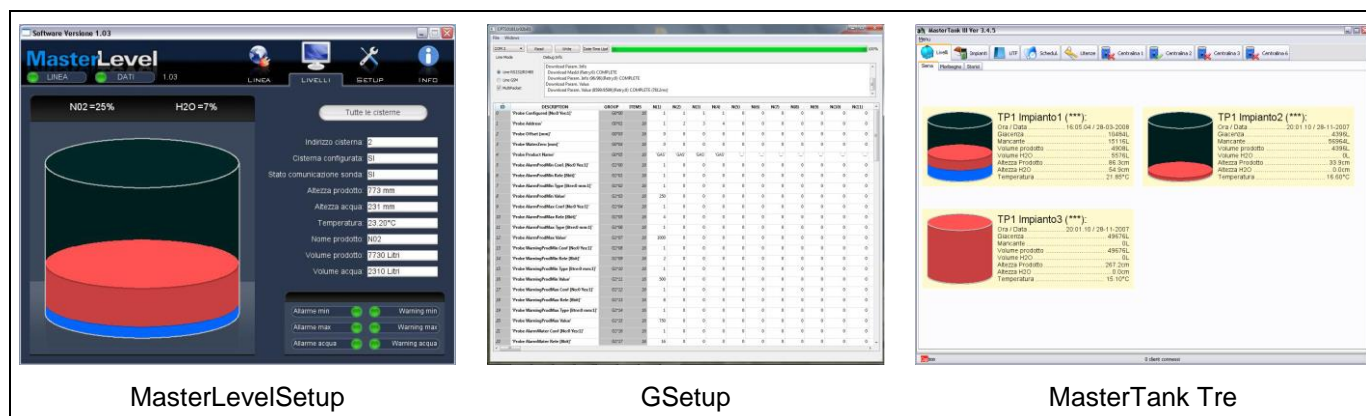
• Power supply	100-240 VAC 50/60 Hz
• Max. consumption	25 VA
• Operating temperature	-10°C ÷ +40°C
• Relative humidity	5% to 95% (without condensate)
• N° of level gauges that can be connected	8
• N° of intelligent sensors that can be connected	16
• N° of ON/OFF auxiliary sensors that can be connected	4/8
• Relay outputs	4/8
• Output relay capacity	500 mA 24 VCC
• Remote serial communication (host)	RS232/RS485
• Auxiliary serial communication	RS232 LAN GSM/GPRS modem wireless radio
• Remote printer communication	RS232
• Container	Metal, fire-varnished
• Dimensions	315x190x120 mm

Operation

- The main menu is composed of a list of selectable items: LEVELS, PRINTS, DIAGNOSIS and SETUP for the displaying the levels of the tanks, print management, diagnosis and setup control units.

Programming and display from Host

- The control unit can be programmed using the following softwares **MasterLevelSetup** code ATS01008 or **GSetup** code ATS01811.
- It is possible, using the **MasterTank Tre** series software, code **ATS03309**, to remotely monitor (from the main office) up to 128 systems.



Codes

AT11710	/TYPE	/DATA OUTPUT	/GAUGES	/ALARMS
	A: basic	N: RS232/RS485 *	8: 8 gauges	04/04: 4 inputs/4 outputs
	B: with display and keyboard	S: second RS232		08/08: 8 inputs/8outputs
	C: with display keyboard and printer	L: LAN		
	G: with graphical display	G: GSM/GPRS modem		
		R: wireless radio		

* Possible with converter, code AT13600/K, to be purchased separately

Specification subject to change without notice